

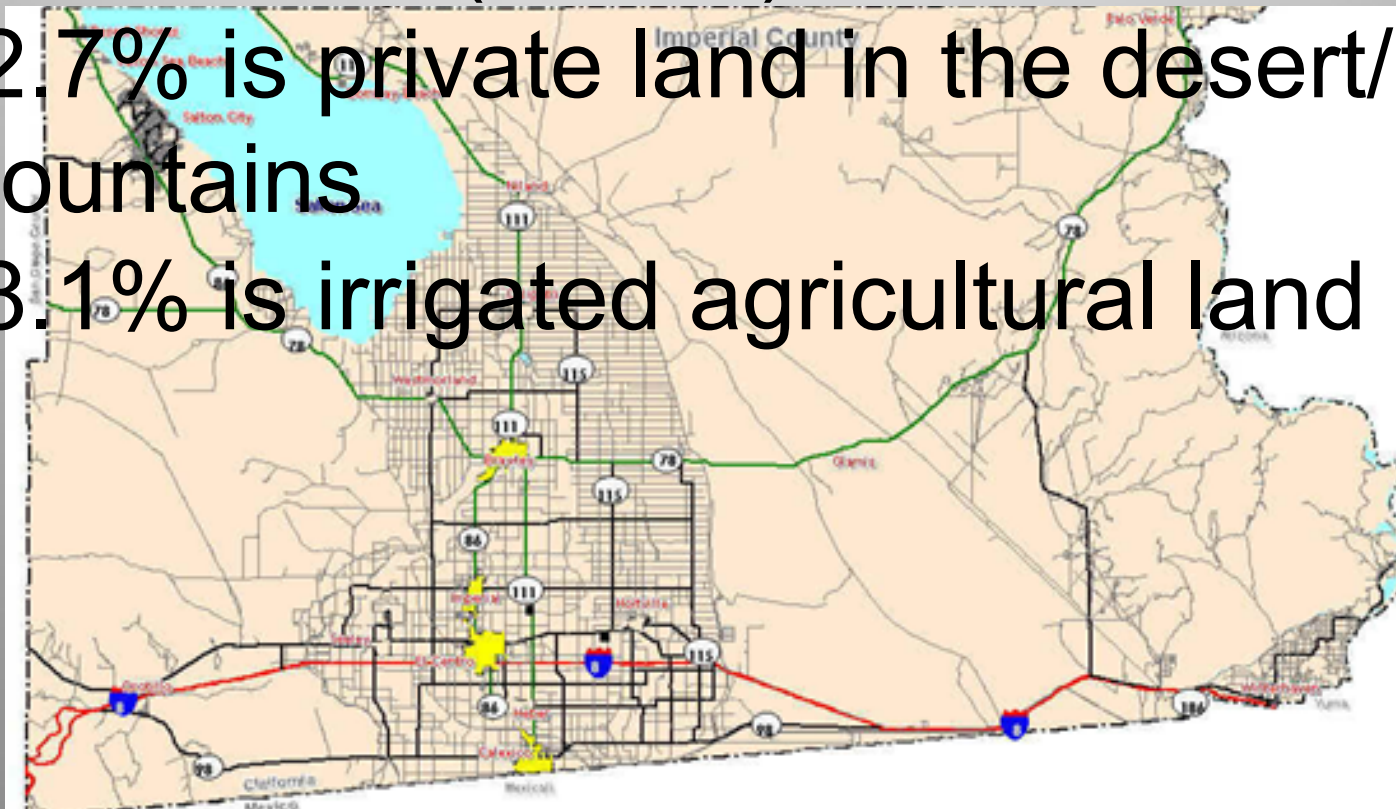
Renewable Energy in Imperial County



**The Salton Sea:
Restoration for a Healthy Future**

Land Use

- Imperial County extends over 4,597 square miles.
- Largest land owner is the Federal government (49.6%)
- 22.7% is private land in the desert/mountains
- 18.1% is irrigated agricultural land

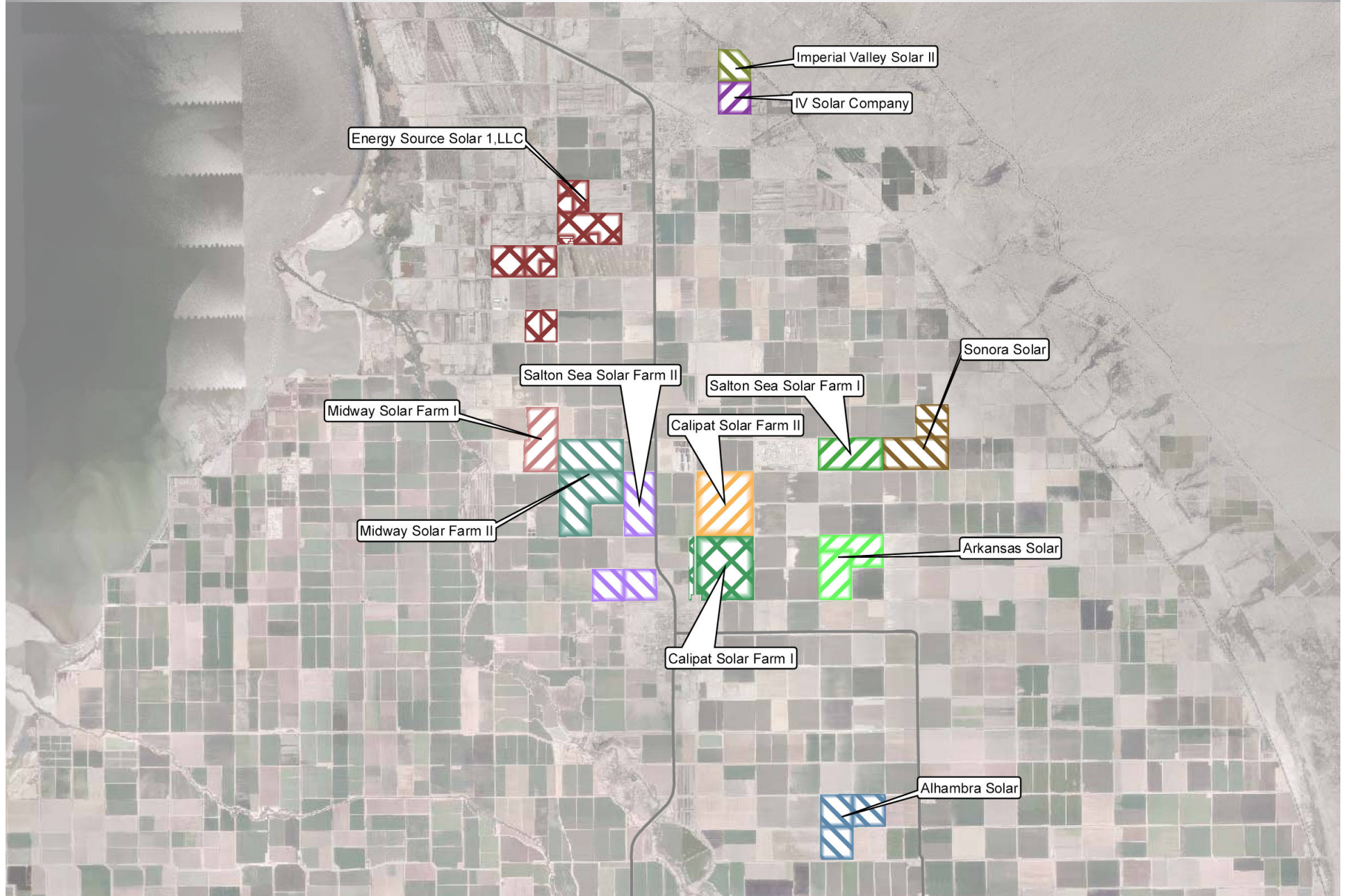


Solar PV Energy

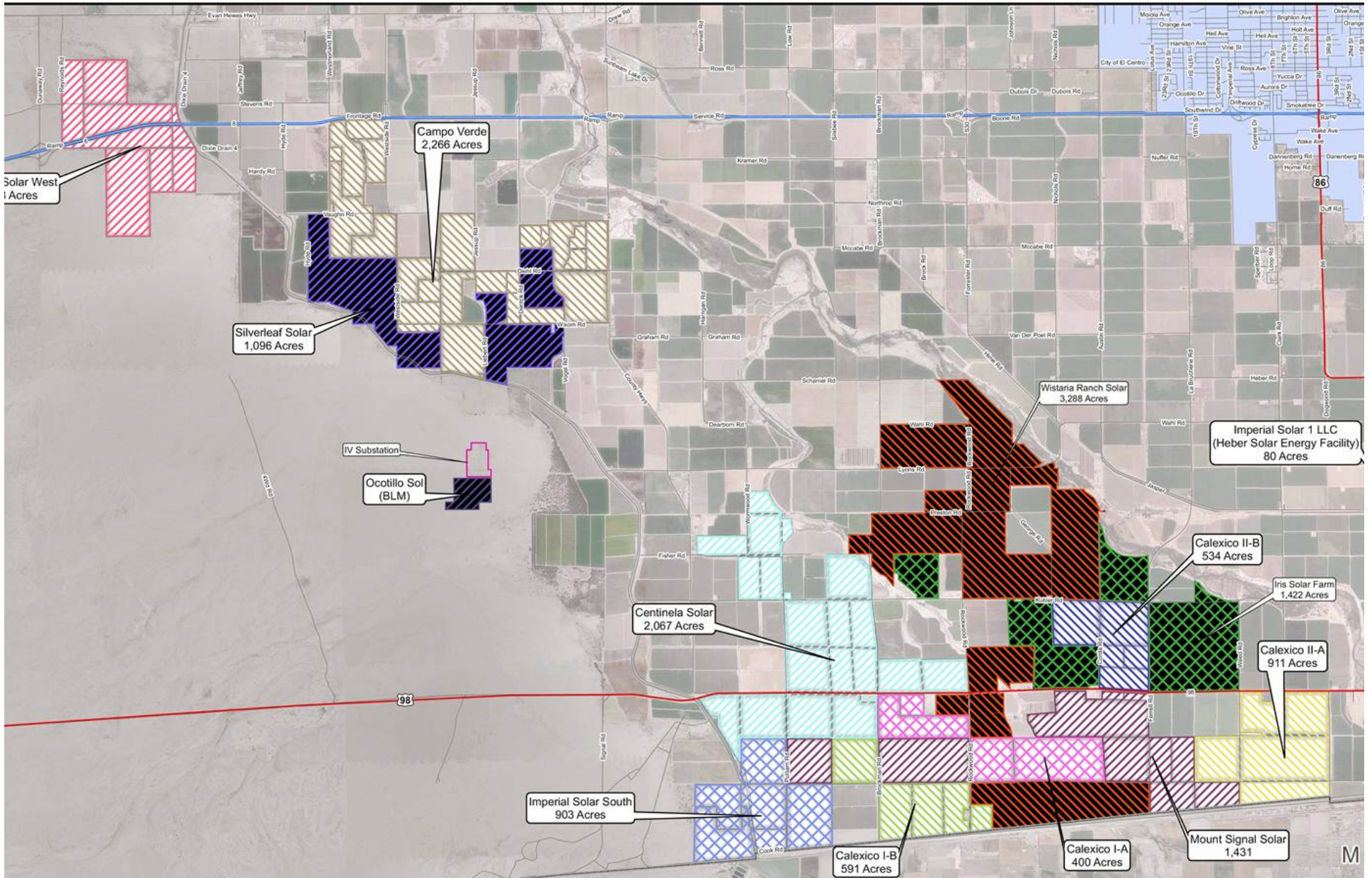
- 18 Projects Approved, 7 Operational, 5 Under Construction
- 3 Projects in Permitting Process
- 2,200 – Total MW



Northern End



Southern End



Geothermal Energy

- 18 – Operating Plants,
- 650 MW generation
- 2,000 MW potential at Salton Sea Reservoir

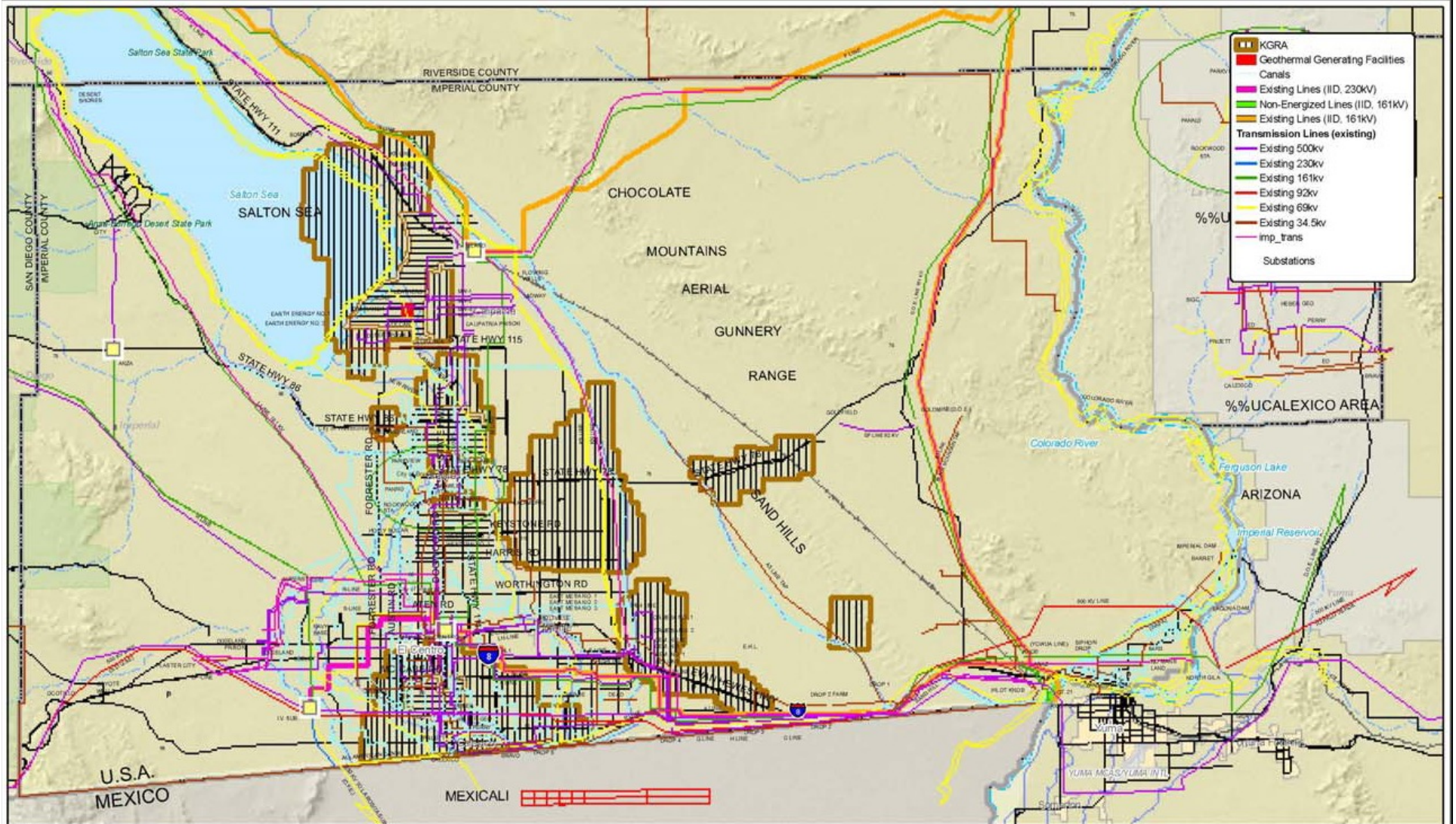
*Ormat Brawley North plant, August 2008



Hudson Ranch I



KGRA's in Imperial County



KNOWN GEOTHERMAL RESOURCE AREA AT THE SALTON SEA



Other Potential Technologies

- Biomass
- Biofuels
- Algae
- Solar Gradient Ponds



P

age

DESERT RENEWABLE ENERGY CONSERVATION PLAN BOUNDARY AREA MAP



Imperial County Renewable Energy and Transmission Element Update



Review of Program

- Update the Renewable Energy and Transmission Element
- Develop Implementing Ordinances
- Assure General Plan Internal Consistency
- Provide CEQA Documentation
- Implement Stakeholder Public Outreach Program

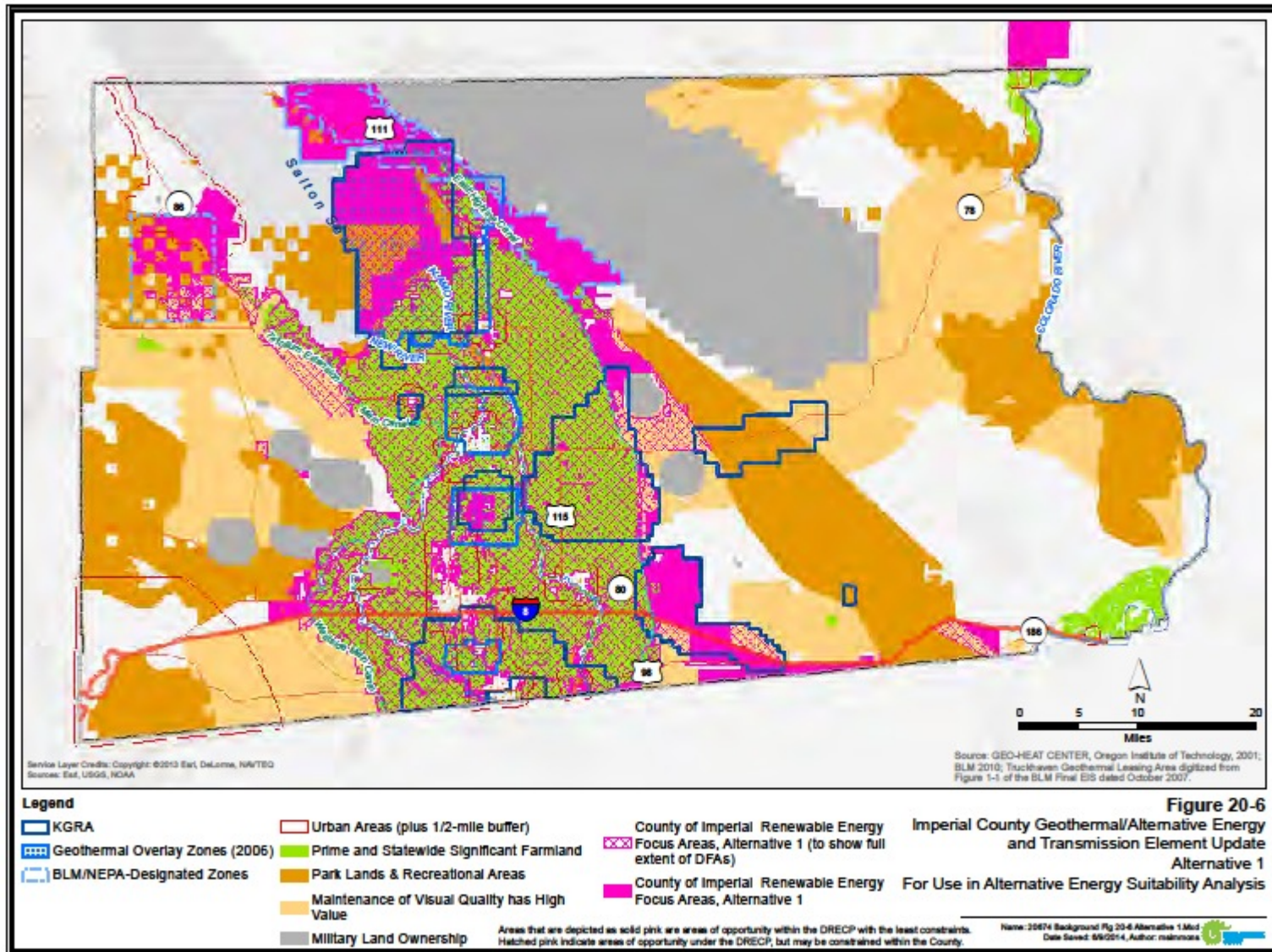


Community and Environmental factors

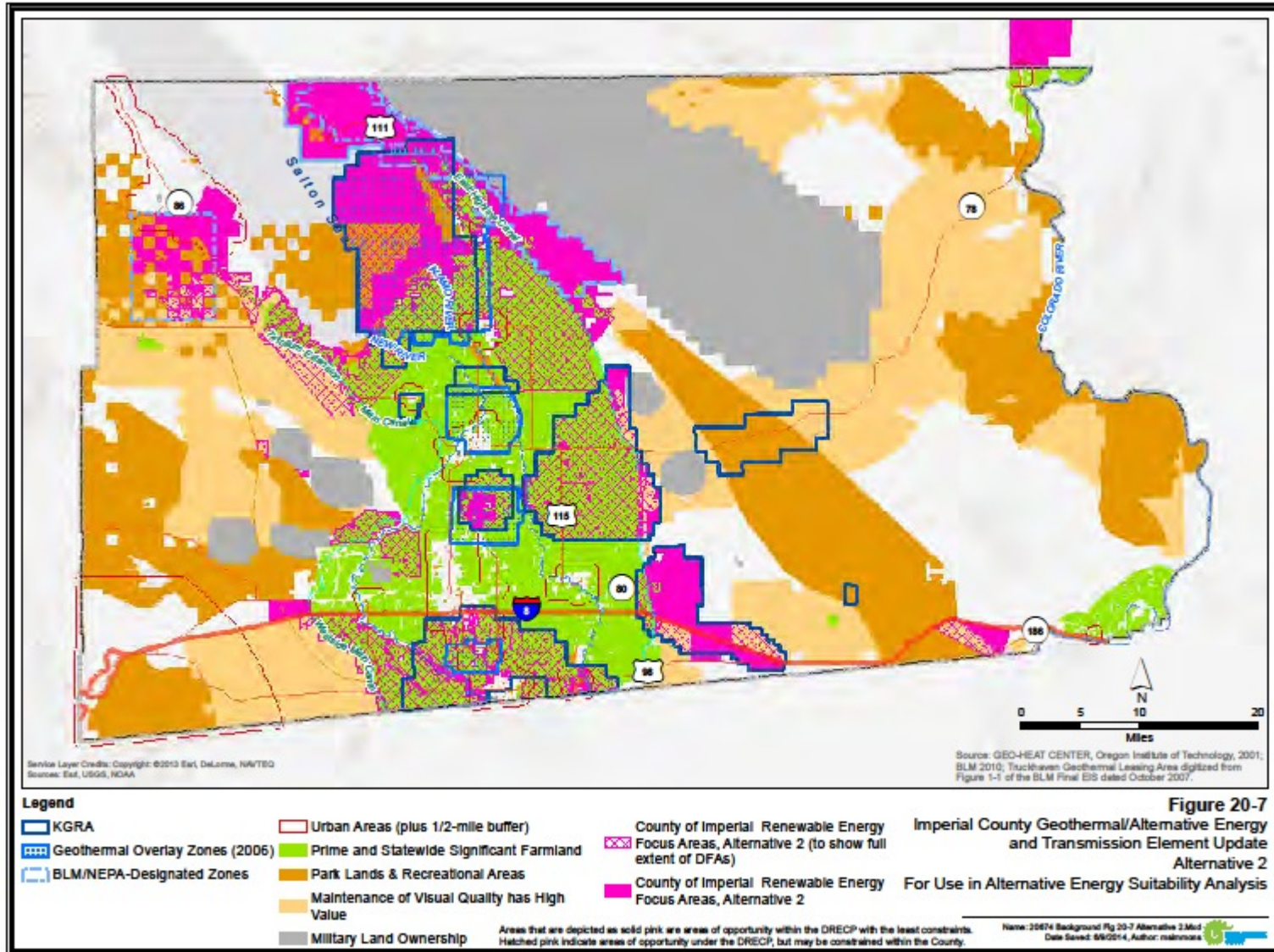
- Cultural Resources
- Air Quality
- Environmental Justice
- Public Health
- Adequacy of Environmental Mitigation
- Water Resources



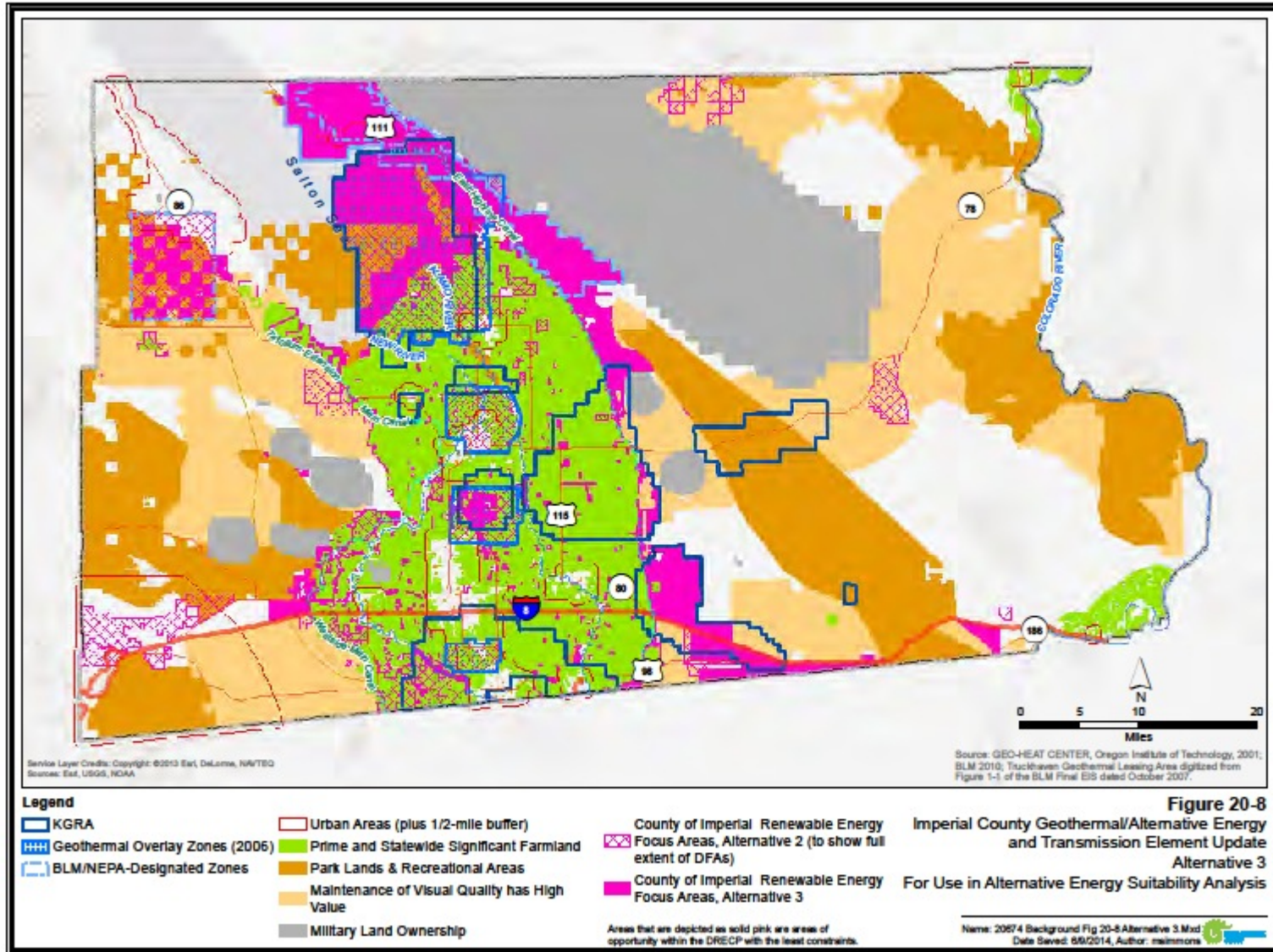
Alternative 1



Alternative 2



Alternative 3



Questions

